



16 March 2021

KEY HIGHLIGHTS**35 PoEs**

IOM supported officials responsible for COVID-19 screenings

**2 Million**

Individuals screened for COVID-19 at IOM supported PoE sites

**276**

Handwashing Stations procured and installed by IOM

**220.000**

Washable barrier masks distributed to refugees and host communities

**1.6 Million**

Individuals reached through COVID-19 awareness and hygiene promotion campaigns



©IOM Rwanda 2020

SITUATION OVERVIEW


Rwanda reported its first COVID-19 positive case on 14 March 2020 and as of 15 March 2021, confirmed cases stands at 20,302. Since the beginning of the pandemic, the Government of Rwanda took several measures in order to strengthen the country's ability to mitigate the risk of COVID-19 transmissions, including of limiting large gatherings and encouraging remote working arrangements.

In addition, a curfew was put in place to prevent unnecessary movements and land borders were closed, except for goods, cargo and returning Rwandan citizens or legal residents. International passenger flights resumed on the 1st of August 2020.

Arriving passengers must present a negative PCR test result taken within 72 hours prior to their departure. Upon arrival passengers are required to take a PCR test. Departing passengers must present a negative PCR test.


IOM Rwanda COVID-19 Response


INFECTION PREVENTION AND CONTROL (IPC)


-  **66** durable hand-washing stations installed to reach and benefit refugee children and host communities of Kirehe, Gatsibo and Gicumbi districts.
-  **202** hand-washing tippy taps stations and **2,060** (5Lt) bottles of handwashing soap distributed to schools in 3 districts that re-opened in November 2020. The intervention benefited over 25,000 students from refugee camps and host communities.
-  **8** hand-washing tippy taps stations, **750** litres of soap and **500** hygiene kits distributed to the refugees hosted at the Emergency Transit Mechanism (ETM) in Gashora.
-  **Surgical masks**, goggles, gowns and chemical gloves donated to the Rwanda Biomedical Center. The PPE was distributed by RBC to frontline workers at district level in Gihundwe District Hospital in Rusizi and Isange One-stop Centers.
-  **200,000** washable barrier face-masks procured and distributed to vulnerable refugees, including children returning to school in the 6 refugee camps of Rwanda and the surrounding host communities.
-  **250** boxes of surgical masks and **15,000** pairs of protective gloves distributed to healthcare workers in Mahama and Kiziba camps.
-  **25** sets of Personal Protective Equipment (PPE) distributed to the COVID-19 treatment center for refugees in Nyamesheke district.
-  **489** Community members provided with annual health insurance (mutuelle de santé).

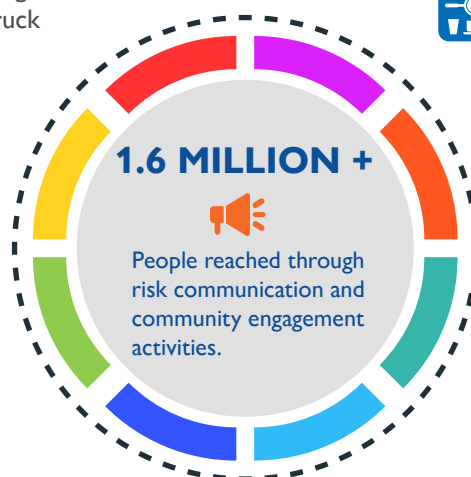
RISK COMMUNICATION AND COMMUNITY ENGAGEMENT (RCCE)


 Distributed COVID-19 health checkpoint posters to ONE UN and the main UN partners in Rwanda.


 Carried out awareness campaign on basic hygiene practices to truck drivers at Masaka Port in Kigali.


 Conducted awareness raising campaigns at Points of Entry (PoEs), markets and in border communities in Rusizi district, reaching more than 600,000 individuals.

 Handed over risk communication and community engagement equipment in refugee camps such as megaphones, radios, posters, banners, printers, microphones and flyers used in viral diseases' awareness raising activities, targeting refugees and host communities.



 IOM physicians and nurses provided preparedness awareness raising sessions to hospitality industry workers in Kigali.

 Translated informative brochures on COVID-19 into Kinyarwanda and Kiswahili that have been circulated through ONE UN media channels and websites.

 Conducted a 2-week COVID-19 and viral diseases' prevention awareness raising campaign in the 3 districts of Rubavu, Karongi and Musanze with local radio stations that have coverage over marketplaces and bus stations, reaching 1 million individuals.

POINTS OF ENTRY



1

Population Mobility Mapping report published.



350

Health care workers supported through incentives to conduct COVID-19 screenings at 35 PoEs.



58

Border Official trained on COVID-19 prevention measures.

Points of Entries covered

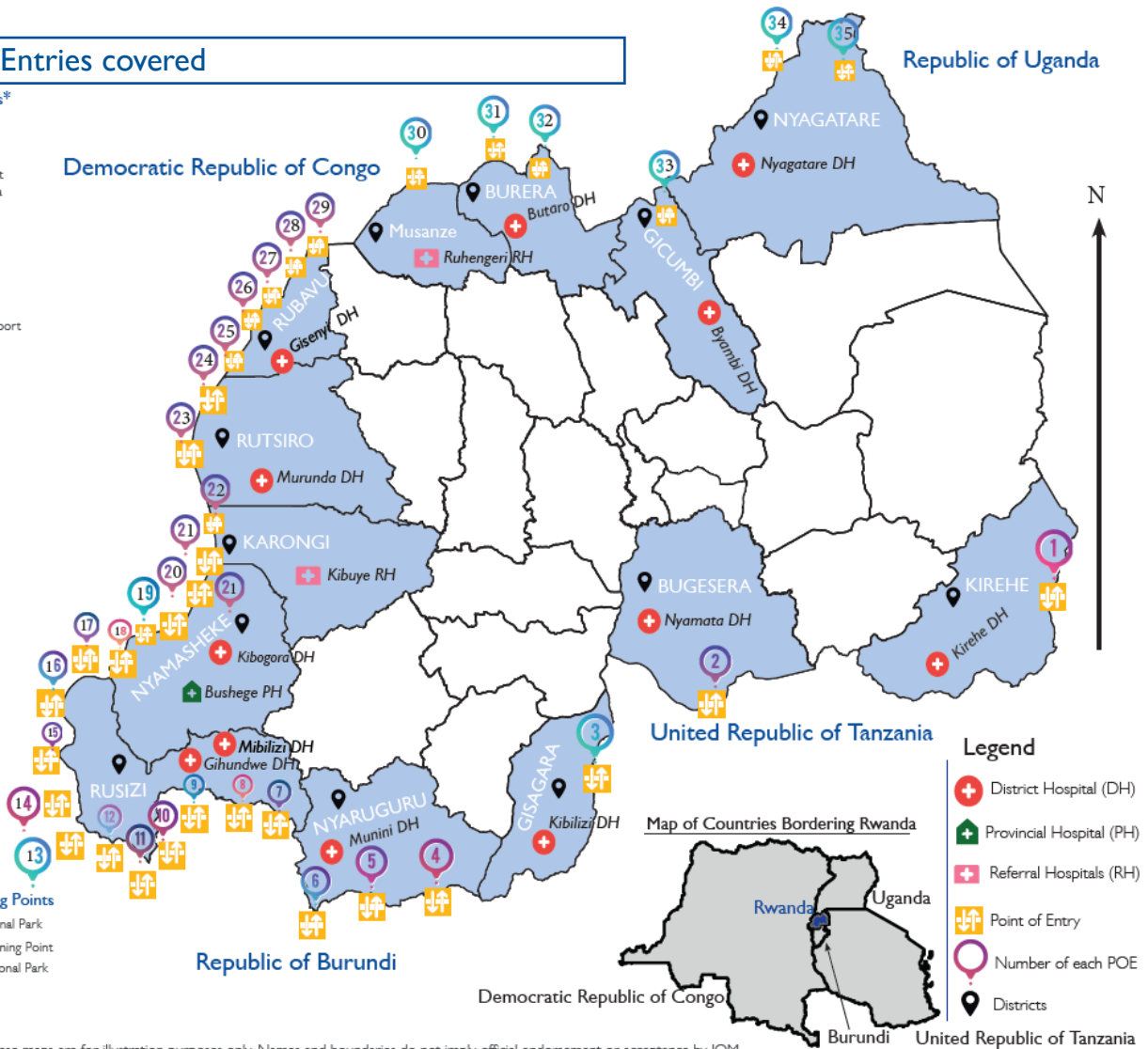
Point of Entries*

1. Rusumo
2. Namba
3. Akanyaru Haut
4. Akanyaru Bas
5. Nshili- Remera
6. Bugarama
8. Ruhwa
9. Cogefar
10. Rusizi (i)
11. Rusizi (ii)
12. Hepfo
13. Sumoyamana
14. Kamembe Airport
15. Nkombo
16. Budike
17. Rugari
18. Kirambo
19. Nyamitaka
20. Shuguri
21. Mwaga
22. Ruganda
23. Nkora
24. Buganura
25. La Corniche
26. Poids Lourds
27. Brasserie
29. Kabuhanga
31. Cyanika
32. Buhita
33. Gatuna
34. Buziba
35. Kagitumba

Some PoEs above also cover smaller crossing points in their area.

Other Screening Points

7. Nyungwe National Park
28. Rugerero Screening Point
30. Volcanoes National Park



DISCLAIMER: These maps are for illustration purposes only. Names and boundaries do not imply official endorsement or acceptance by IOM.



©IOM Rwanda 2020

IOM supported healthcare and frontline workers of Rwanda District Hospitals conducting screenings at PoEs to improve surveillance and early detection of possible Ebola Virus Disease (EVD) or COVID-19 cases, through the provision of incentives. Arrival and departure screening for COVID-19 was conducted, reaching a total of over 2 million travellers at 35 POEs in 13 districts in Rwanda.

IOM conducted and published the first [Population Mobility Mapping \(PMM\)](#) in Rusizi District to strengthen viral diseases and COVID-19 preparedness and response measures by identifying specific sites most exposed to the risk of the spread of the disease.

ADDRESSING SOCIOECONOMIC IMPACT



©IOM Rwanda 2020

Since the beginning of the COVID-19 pandemic, the International Organization for Migration (IOM) procured and distributed more than 200.000 protective face masks to Governmental partners, local authorities, health workers, border officials, refugees and community members in Rwanda. Out of the total number of face masks procured and as part of the COVID-19 socioeconomic response, IOM in partnership with UNHCR, the Government of Rwanda and the Non-Governmental Organization Maison Shalom distributed 20.000 reusable and washable face masks to refugees living in Mahama camp.

The masks were produced by a group of 34 women in the Mahama refugee camp as part of the income-generating project to improve their livelihood. Mahama camp, located in the Kirehe district in the Eastern province of Rwanda, is home to over 60.000 refugees mostly from the Republic of Burundi.

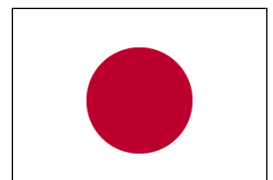
Rebeca Kankidi lives with her family of 10 members in the camp. She is one of the women who were contracted to make the masks.

"I'm happy that we have been entrusted as women with the production of barrier masks to protect refugees against the COVID-19 pandemic. I am very grateful because the income I get from this will help support my family," said Rebeca Kankidi.

At the height of the COVID-19 nationwide lock-down, the Government of Rwanda introduced a food relief program to provide food to over 20.000 vulnerable households on a daily basis. The program relied on voluntary labour and financial contributions. Andre KAGWA, IOM Rwanda IBM Senior Assistant, stepped in to help his community by contributing financially and his time to distribute food parcels.

"I feel fortunate for the opportunity to serve my community, and I would like to encourage each individual to bring their contribution during this difficult time" said Andre KAGWA, IOM Rwanda.

IOM's COVID-19 response activities are supported by:



IOM's COVID-19 response activities are implemented in partnership with:



For further information contact: pir@iom.int